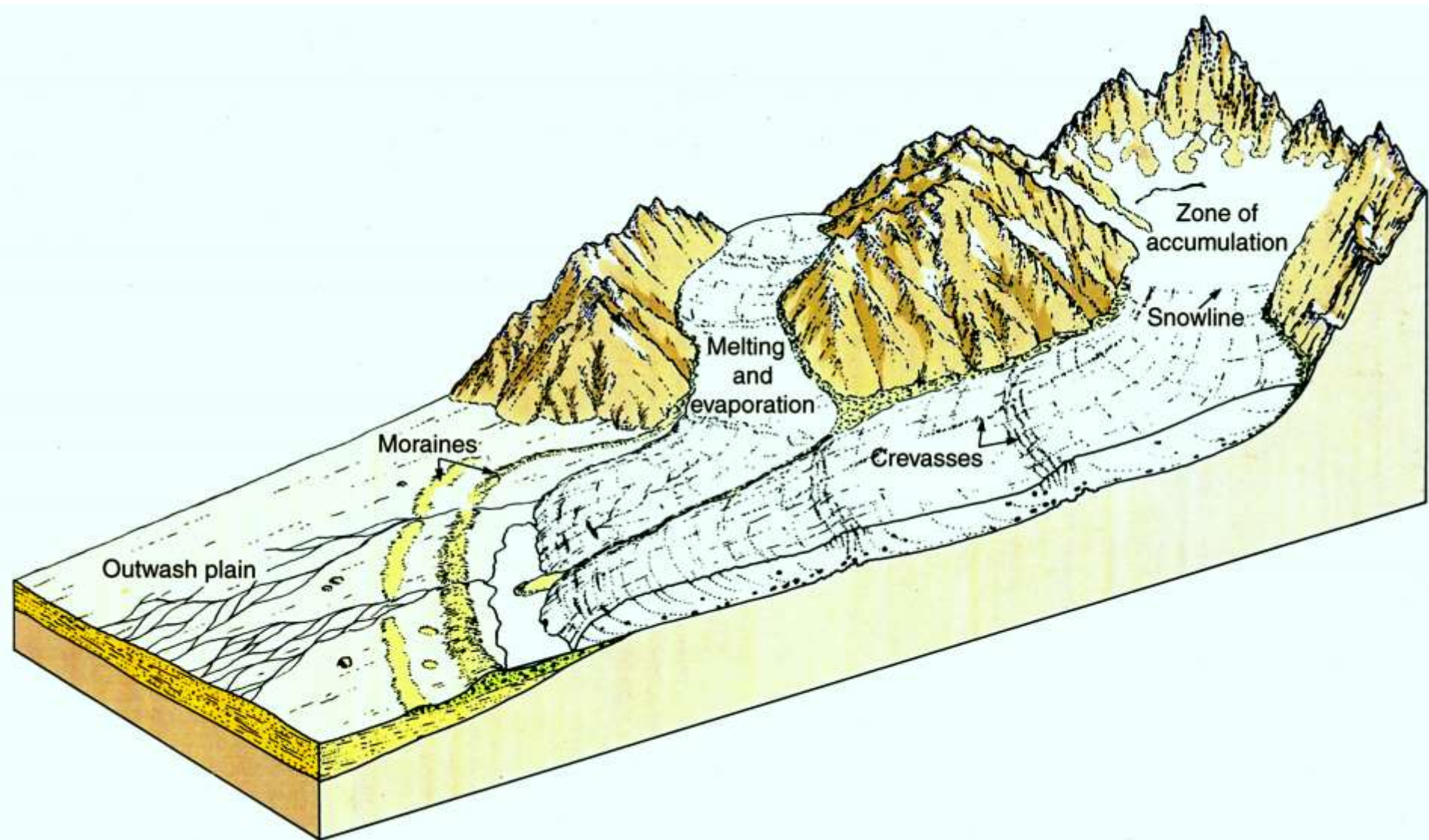


# Alpine Glaciers





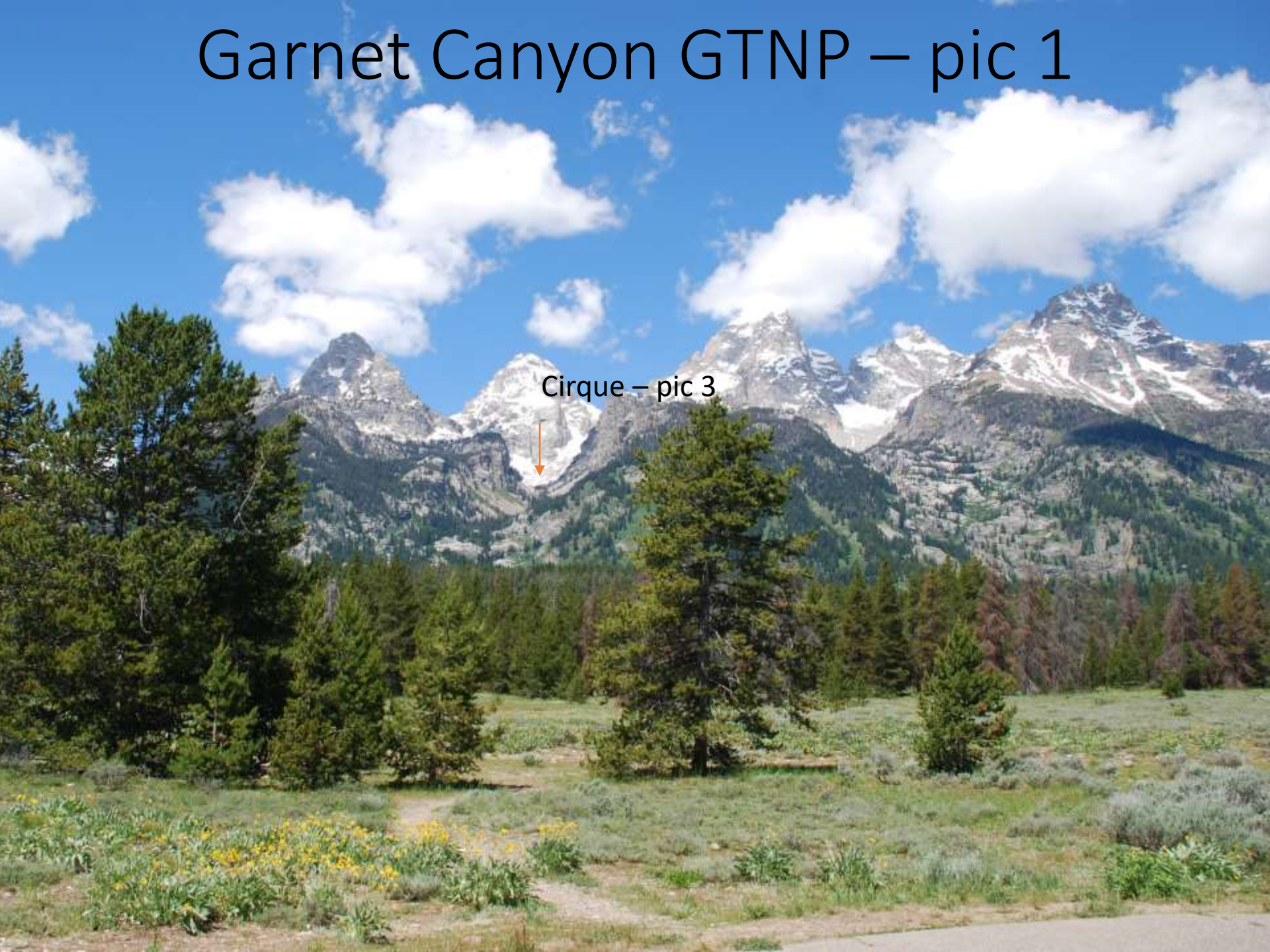
Cliff & valley  
glacier

(note debris  
cover)

# Glacier Nomenclature – The parts of glaciers...

- Cirque = accumulation zone/valley head
- Snowline
- Bergschrund
- Trimline
- Till
- Erratics and dropstones
- Moraines
  - Medial
  - Lateral
  - Recessional
  - Terminal
- Kettles
- Crevasse
- Serac
- Where in relation to glaciers?
  - En-glacial = inside
  - Sub-glacial = beneath
  - Peri-glacial = near
  - Supra-glacial = on top of
  - Pro-glacial = in front of
- Examples:
  - Englacial stream
  - Proglacial stream
  - Subglacial stream
  - Periglacial stream
  - Supraglacial stream

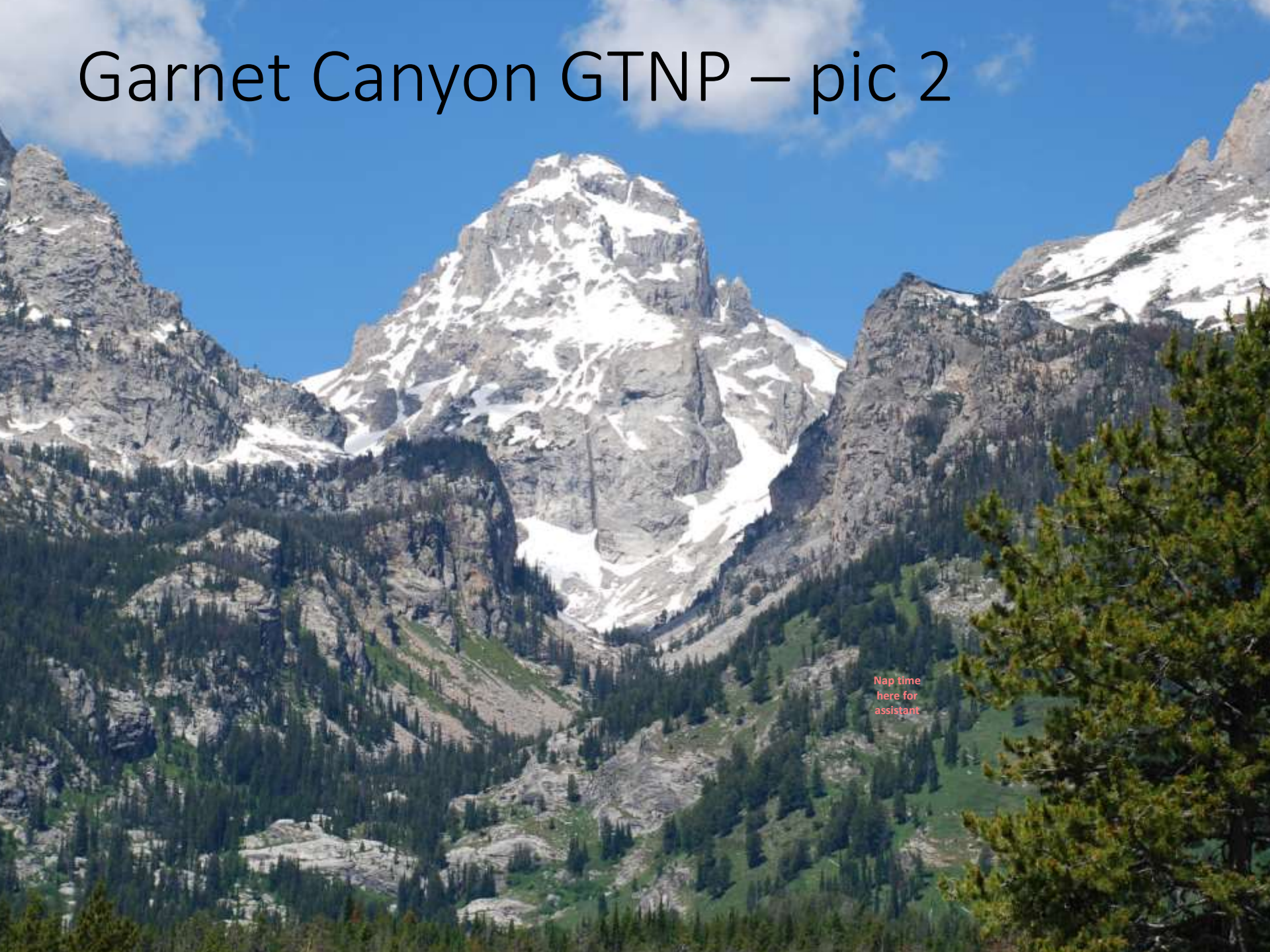
# Garnet Canyon GTNP – pic 1



Cirque – pic 3



# Garnet Canyon GTNP – pic 2



Nap time  
here for  
assistant

# Garnet Canyon, Grand Teton National Park, WY – pic 3

Road – pic 1



# Garnet Canyon Cirque, Grand Teton National Park, WY

This is an empty glacial accumulation zone (cirque)



That's a tent



These are people

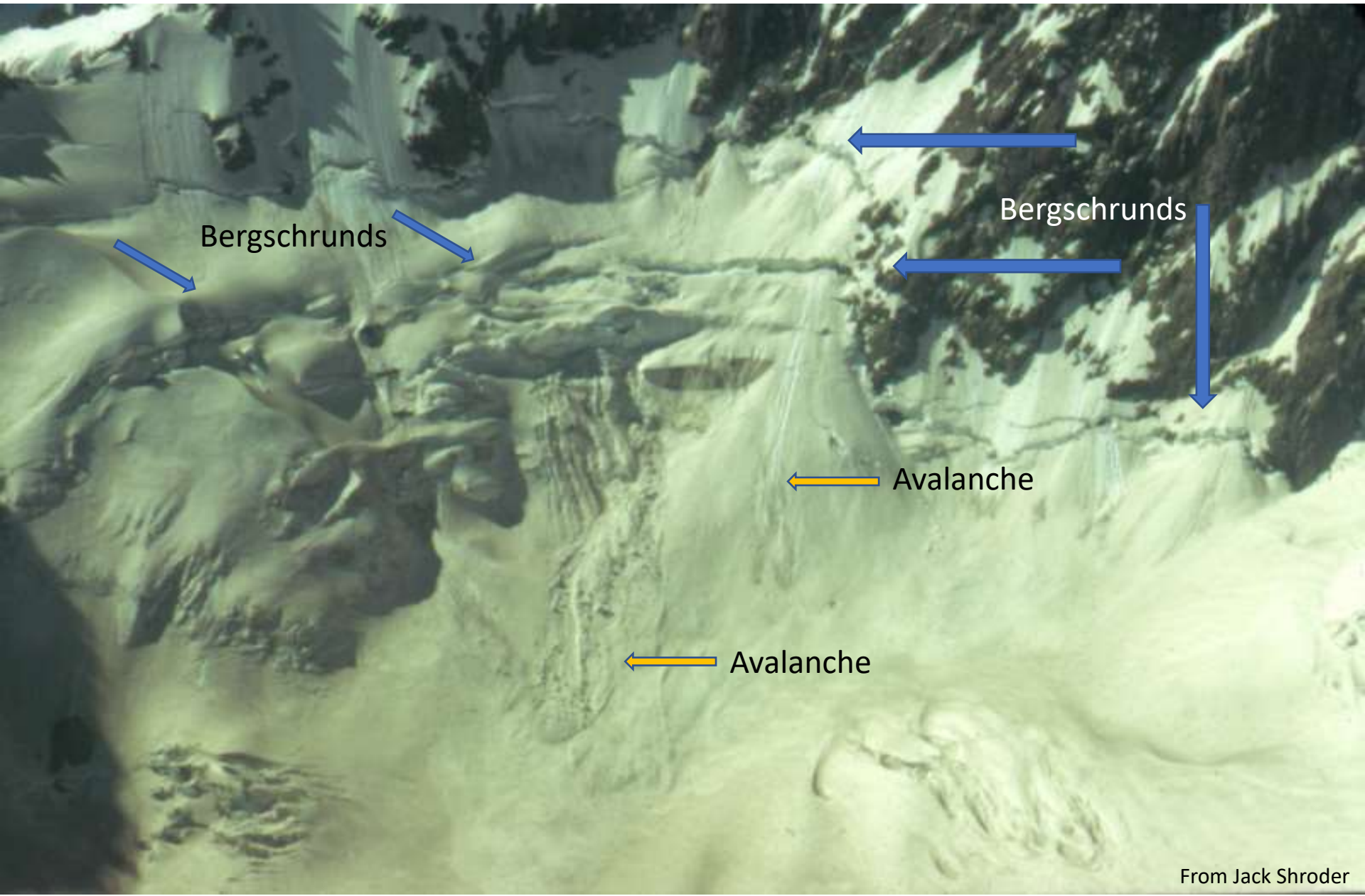


Note avalanche feeds & transient snow lines





# Note avalanches & bergschrunds



Bergschrunds

Bergschrunds

Avalanche

Avalanche

# White Ice Glacier – Batura – Hunza Region



91 72

Photo by J. Shroder

# Batura White Ice Glacial Retreat

