

Ice Cliffs



Photo by J. Shroder



Photo by J. Shroder

Tasman Glacier with trimlines



Trimline passing into lateral moraine



Trimline



Lateral Moraine



Kettle on Tasman Glacier – water color (rock flour) – ice cliffs



Upwelling sub-glacial meltwater



Tidewater to NZ glaciers



Accumulation to seracs

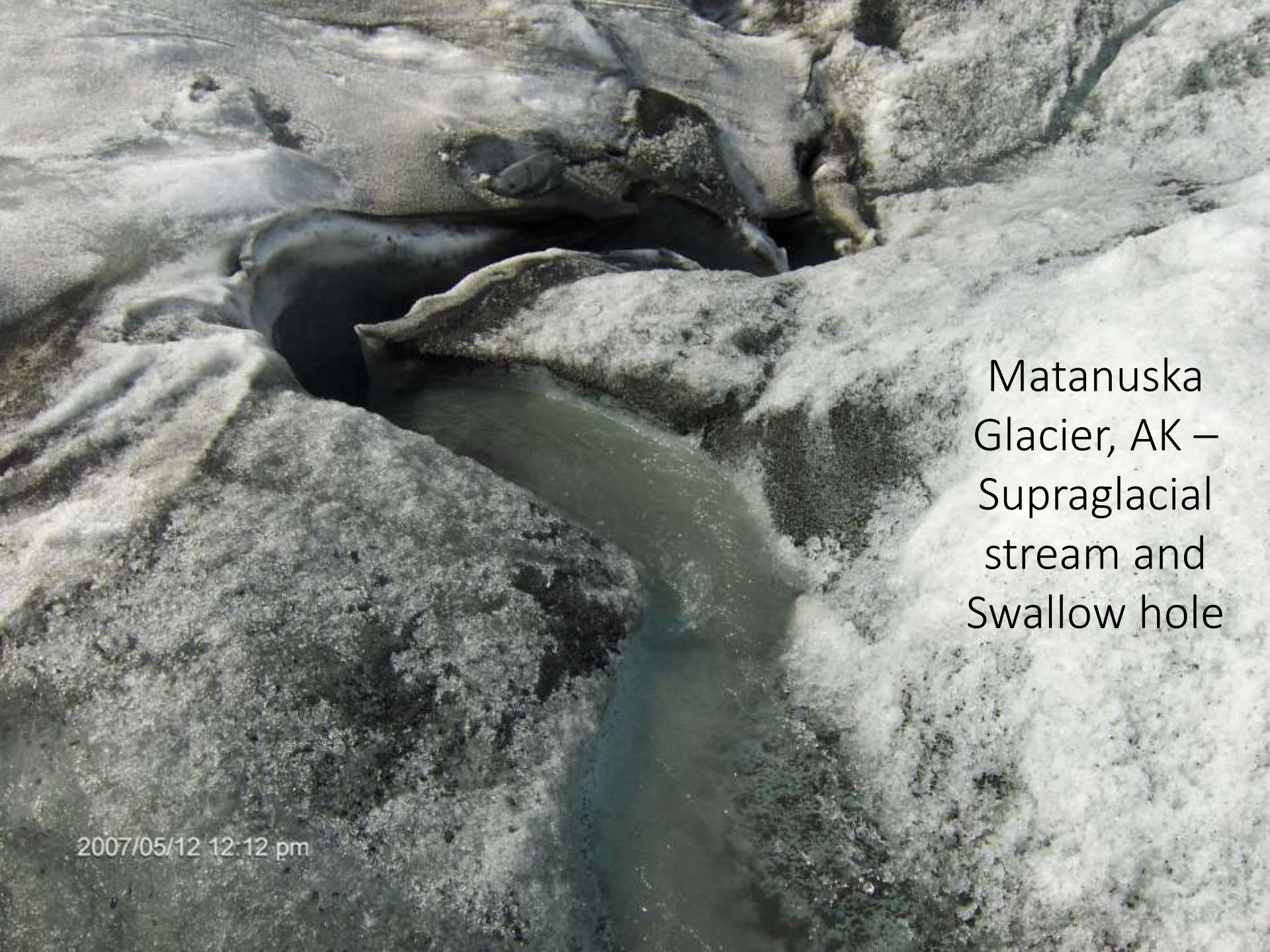


Ice-cored moraine (1950s in foreground – terminus in 1970s in background)



Sorted & stratified kame gravels





Matanuska
Glacier, AK –
Supraglacial
stream and
Swallow hole

2007/05/12 12:12 pm

Meltwater from ice portal



Seracs & lateral moraine



Erratics in blue & dirty ice



Terminal Moraine

