



# UNO ADVANTAGE 2023-2024

## MISSION

As both a Metropolitan University of distinction and a Carnegie Doctoral Research institution, the University of Nebraska at Omaha transforms and improves the quality of life locally, nationally, and globally.

## VISION

The University of Nebraska at Omaha is recognized as the premier Metropolitan University throughout the United States and the world.

## UNO'S ACCREDITATION & CLASSIFICATIONS

### Accreditation:

The University of Nebraska Omaha (UNO) is accredited by the Higher Learning Commission (HLC), a highly respected, long-standing accreditor of post-secondary/higher education institutions.\*

### Carnegie Classifications:

- ▶ Doctoral Universities: High Research Activity
- ▶ Community Engagement: Curricular Engagement and Outreach Partnerships

## CORE VALUES

- EXCELLENCE
- ENGAGEMENT
- INCLUSION
- DISCOVERY
- INTEGRITY
- MAVERICK SPIRIT

## UNO'S 6 ACADEMIC COLLEGES

- Arts and Sciences
- Business Administration
- Communication, Fine Arts and Media
- Education, Health, and Human Sciences
- Information Science & Technology
- Public Affairs and Community Service

## UNO'S STRATEGIC GOALS



**STUDENT PERFORMANCE**



**WORKFORCE DEVELOPMENT**

# 15,015

Total enrollment including undergraduate and graduate students



11,859  
Undergraduate Students

3,156  
Graduate Students

2,953  
Students in a dual enrollment course



## UNO FACULTY

# 15:1

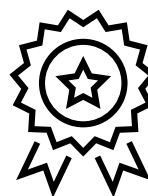
Fall 2022 Student to Faculty Ratio (based on 12,366 students and 832 faculty)

# 35.6%

Of UNO students are first generation (5,343 students)

# 32.3%

Of UNO student population is ethnically diverse (4,849 students)



# #17

Ranked "Best for Vets" among top universities and colleges in the country for military-connected students. Military Times, 2023

## Division I Men's Sports

Baseball | Basketball | Golf | Hockey  
Soccer | Swimming & Diving | Tennis

## Division I Women's Sports

Basketball | Cross Country | Golf | Soccer | Softball  
Swimming & Diving | Tennis | Track & Field | Volleyball

\*The commission can be contacted at 230 South LaSalle Street, Suite 7-500, Chicago, IL 60604; telephone 800.621.7440/312.263.0456; fax 312.263.7462; email info@hlcommission.org

### Cutting-Edge Facilities



AVIATION ADVANCED SIMULATION FACILITY



BIOINFORMATICS COMPUTING LAB



MALLORY KOUNTZE PLANETARIUM



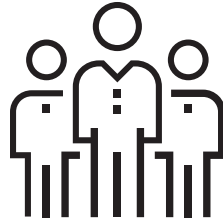
BIOMECHANICS RESEARCH BUILDING



STRAUSS PERFORMING ARTS CENTER



KORALESKI COMMERCE & APPLIED BEHAVIOR LAB



### WORKFORCE DEVELOPMENT

UNO believes strongly in the value of partnerships and collaborating with local and regional organizations to amplify workforce development, career readiness, re-skilling and up-skilling needs of future graduates, job seekers, and those already working in business, non-profit, government and industry roles.

#### Career Connect

All UNO students have access to paid internships. Through Career Connect, we have partnered with 136 employers who have shared over 8,500 paid internships with UNO students. Through these collaborations, the program is actively shaping a future where students have tangible, meaningful pathways to professional growth and development.

### NATIONALLY RANKED ONLINE PROGRAMS

U.S. News & World Report, 2023

#10 Graduate program in criminal justice

#23 Bachelor's program for Veterans

#32 Bachelor's in Business

#42 Bachelor's programs

### EXTRAORDINARY COMMUNITY SUPPORT

Each year alumni, friends, and the Omaha community support UNO through private gifts. Their generosity helps elevate the UNO student experience.

226

Total service learning courses, allowing UNO students to apply what they are learning in class to real-world experiences within the community.

298,253

Hours of service by UNO students through a wide range of community projects.

1,600

Community partners have collaborated with UNO in service learning, internships, volunteering, research, and more.

### COMMUNITY ENGAGEMENT AREAS OF FOCUS

The Office of Engagement is a place where UNO's students, faculty, staff, and community work together to influence positive change in our community.

#### UNO departments, programs, and initiatives within the Office of Engagement include:

- ▶ UNO Service Learning Academy
- ▶ UNO Barbara Weitz Community Engagement Center (CEC)
- ▶ Volunteer and Civic Engagement Programs
- ▶ Community Engagement Partnership Initiative
- ▶ Community Engaged Scholars Transcript Designation

### AFFORDABLE EDUCATION WITHIN REACH

We realize cost is an important factor when choosing a university to attend. We are dedicated to ensuring all students have access to higher education by minimizing financial barriers. We offer financial support in the form of hundreds of scholarships and grants, and work with students to make sure they understand the application process.



Tuition and fees are among the lowest of Nebraska's four-year institutions

